

India's AI-Native MSME Economy

Building the Sovereign AI Proliferation Ecosystem for
Entrepreneurs, MSMEs, and Deep-Tech Innovation.

The Vision

Accelerating the One Person, One Enterprise movement.

The Vehicle

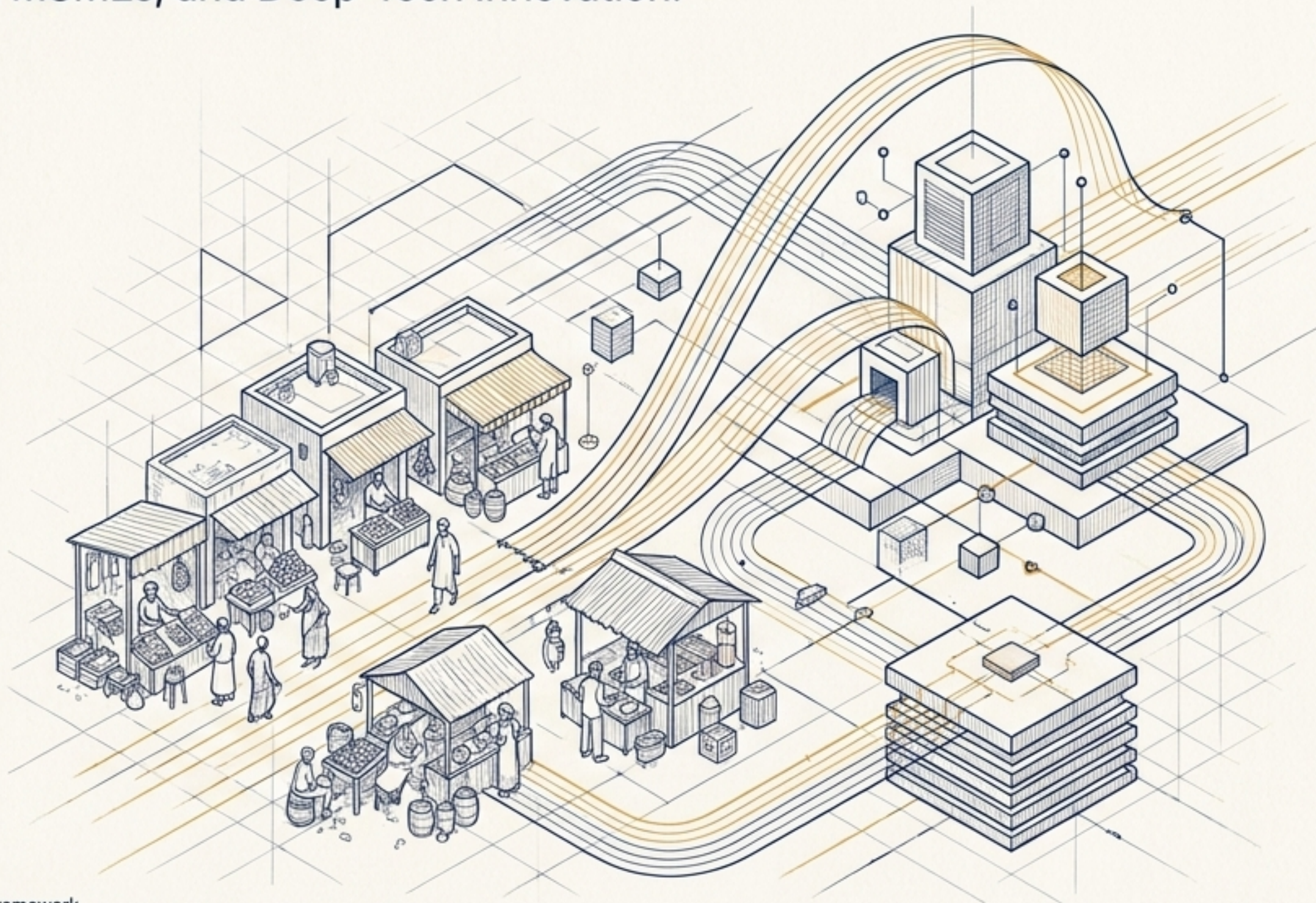
SPIN DTF (Strategic Partnership & Innovation Network – Deep Tech Forum).

The Foundation

Powered by CLEAR™ logic and TRACE™ engineering principles.

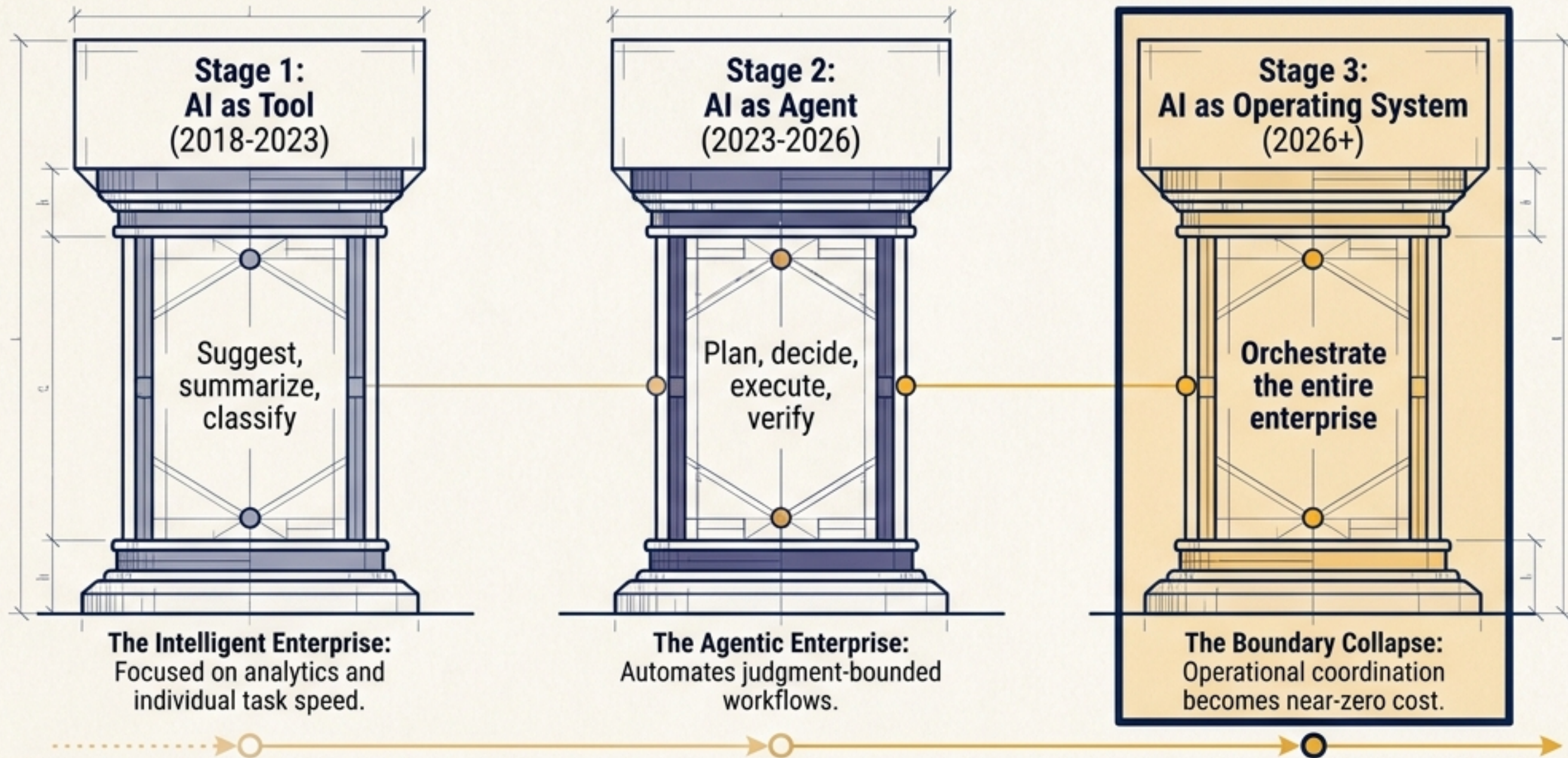
The Enablers

EnWithAI Technologies & NetworkGain Consulting.



The Global Shift: From Tools to Agentic Operating Systems

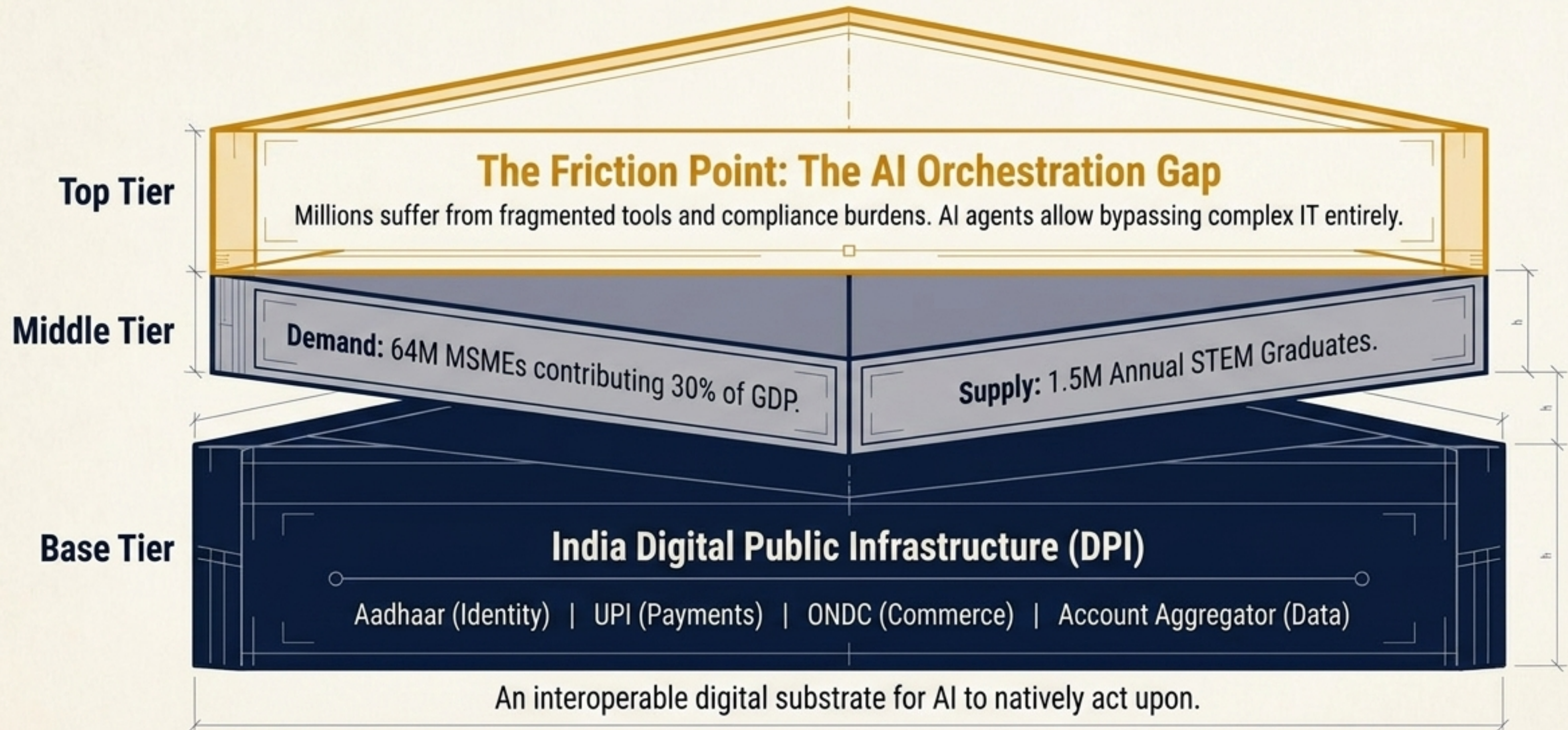
AI is no longer just automating processes; it is democratizing intelligence and fundamentally changing the boundaries of the firm.



The Urgency: Technology, policy, and demographic windows are converging simultaneously within a **narrow 5-year horizon.**

The Unmatched Substrate: DPI meets MSME Scale

India is the only large economy with the infrastructure, scale, and talent necessary to build a native AI-driven MSME economy.



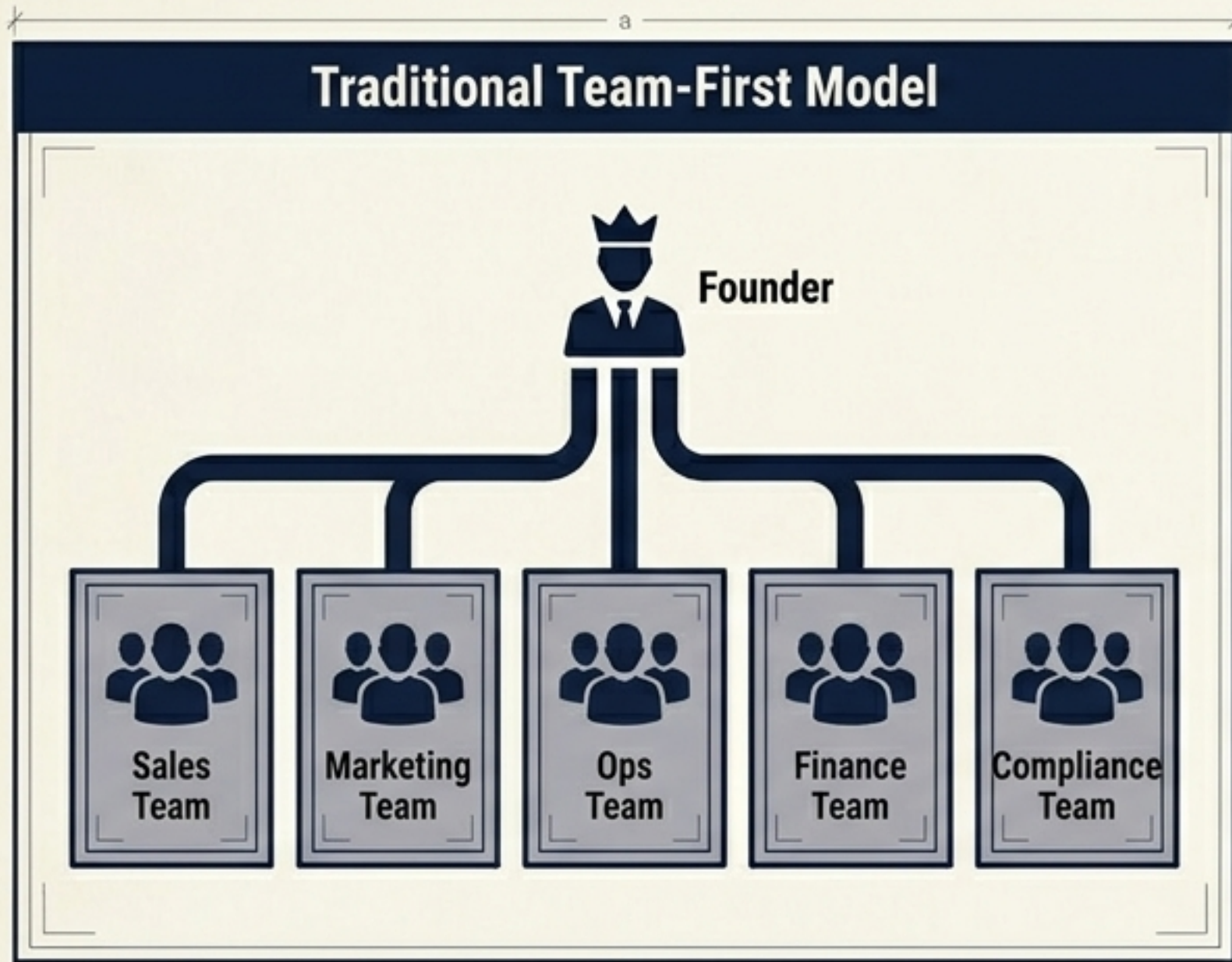
SPIN DTF & Sovereign AI Proliferation (SAI-PRO)

SPIN DTF is the missing connective tissue—an ecosystem, not an institution—designed to translate deep-tech capability into MSME adoption.

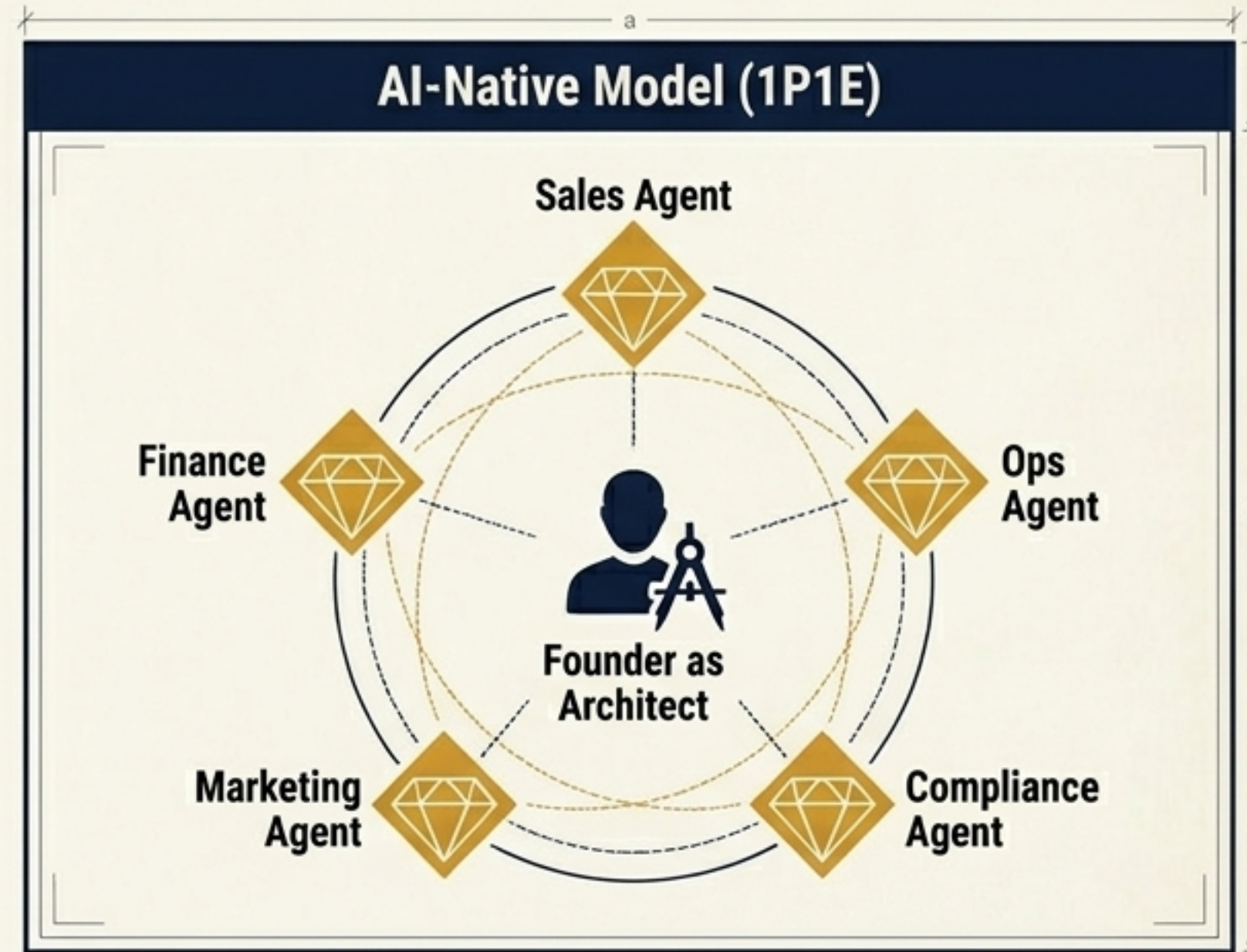


The Economic Paradigm: One Person One Enterprise (1P1E)

AI shifts the minimum viable unit of enterprise from a team to an individual, radically expanding entrepreneurial participation.



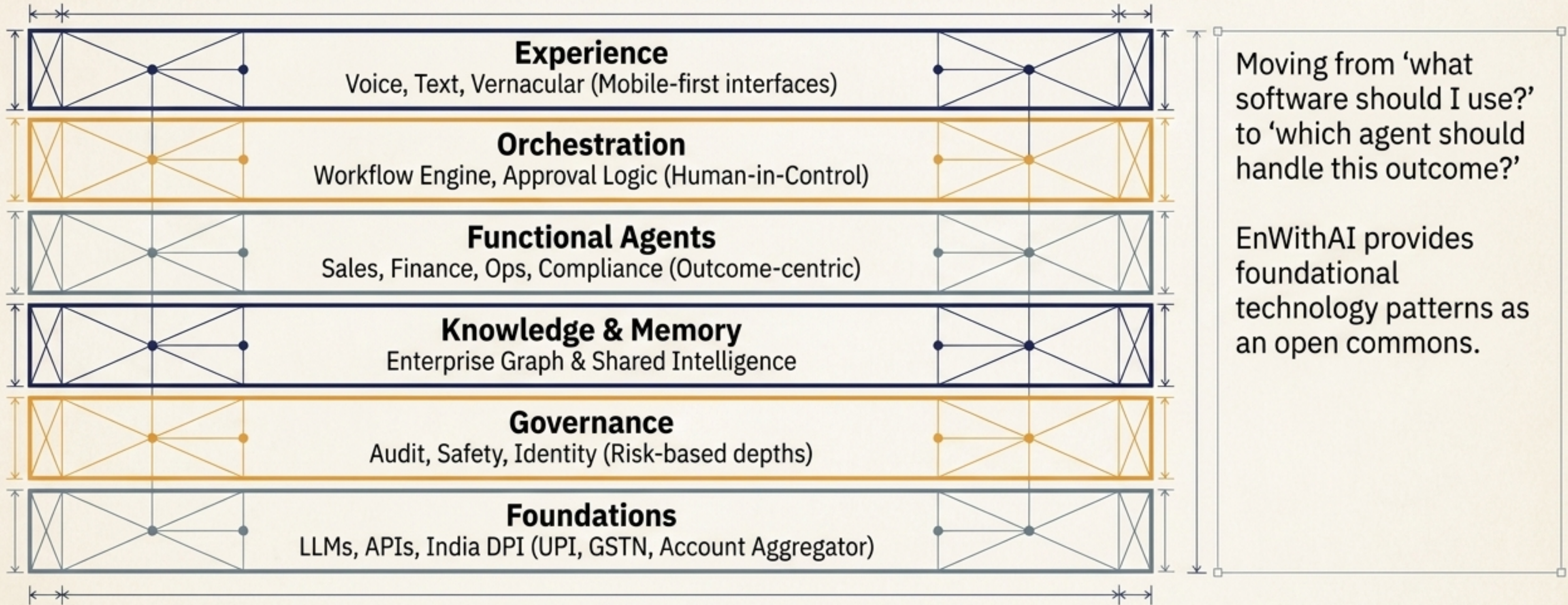
High friction, high capital needs. The firm boundary is limited by human coordination costs.



Low friction, highly scalable. Bootstrapping compresses capital needs; the first hire is an AI agent stack. Unlocks economic inclusion.

The Engine: The AI Business Operating System (BOS)

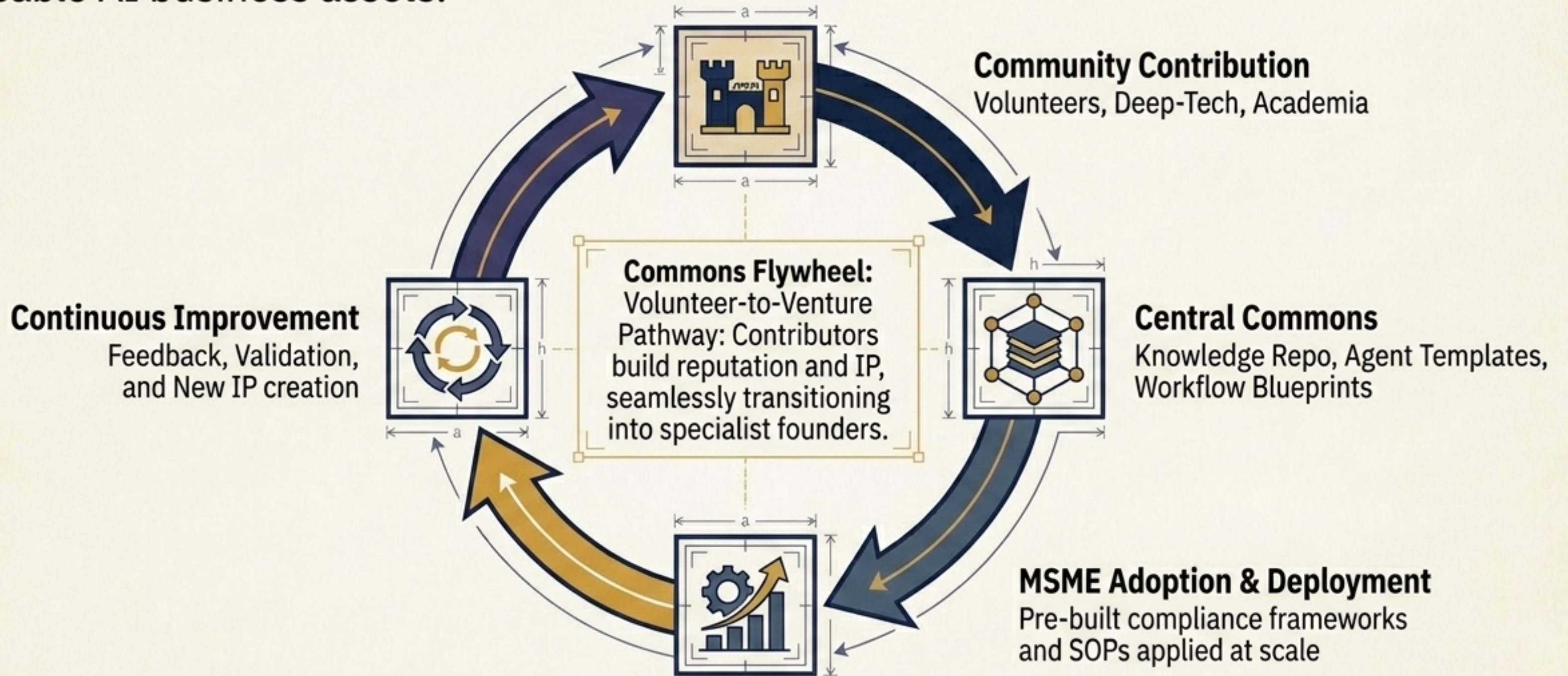
A unified, composable intelligence layer orchestrating business outcomes, natively designed for the reality of Bharat.



CLEAR™ | Canonical Logic for Engineered AI Reasoning | Powered by the Prompt Mastery™ Framework
Prepared with attribution to EnWithAI Technologies Pvt. Ltd. and NetworkGain Consulting. | Aligned with TRACE™-Commons Engineering Principles.

The Infrastructure: The AI Accelerator Commons

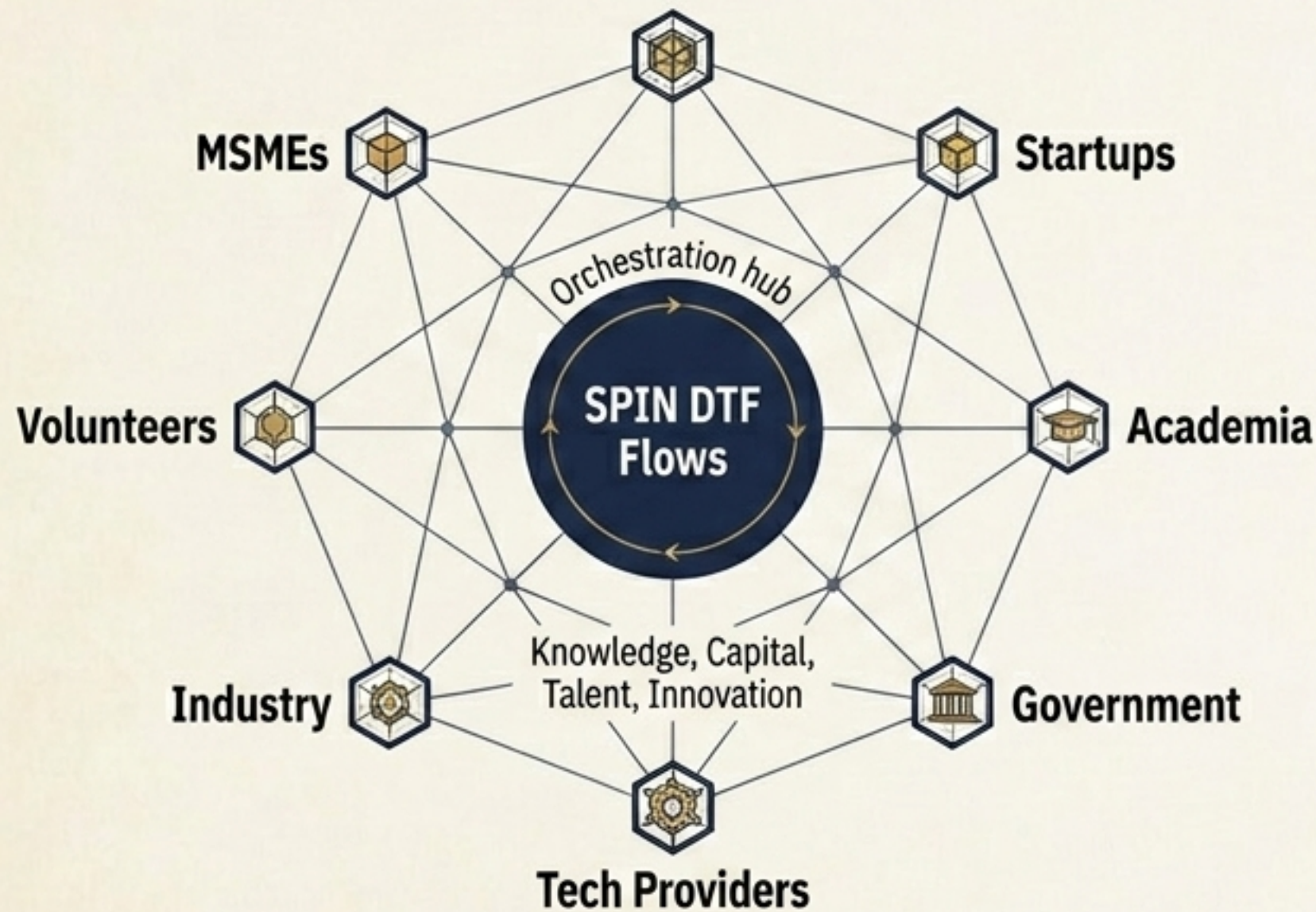
An open-source-inspired ecosystem where the community shares, refines, and deploys reusable AI business assets.



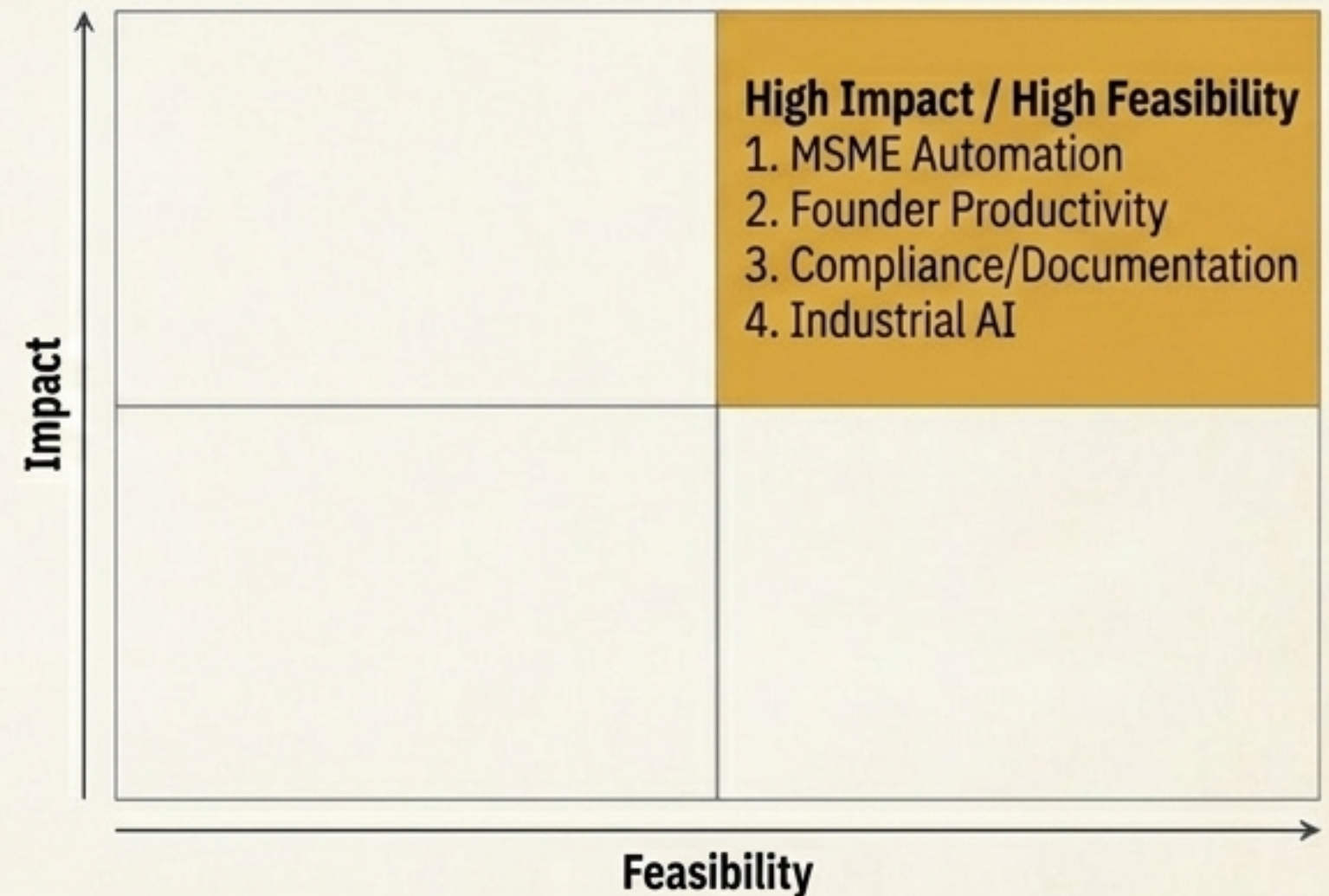
SPIN DTF Ecosystem Map & Tier 1 Priorities

A federated mesh connecting diverse stakeholders to address high-impact, high-feasibility domains.

The Ecosystem Mesh



Tier 1 Immediate Domains



Selection Criteria: Prioritized by MSME density, DPI readiness, and agent capability maturity.

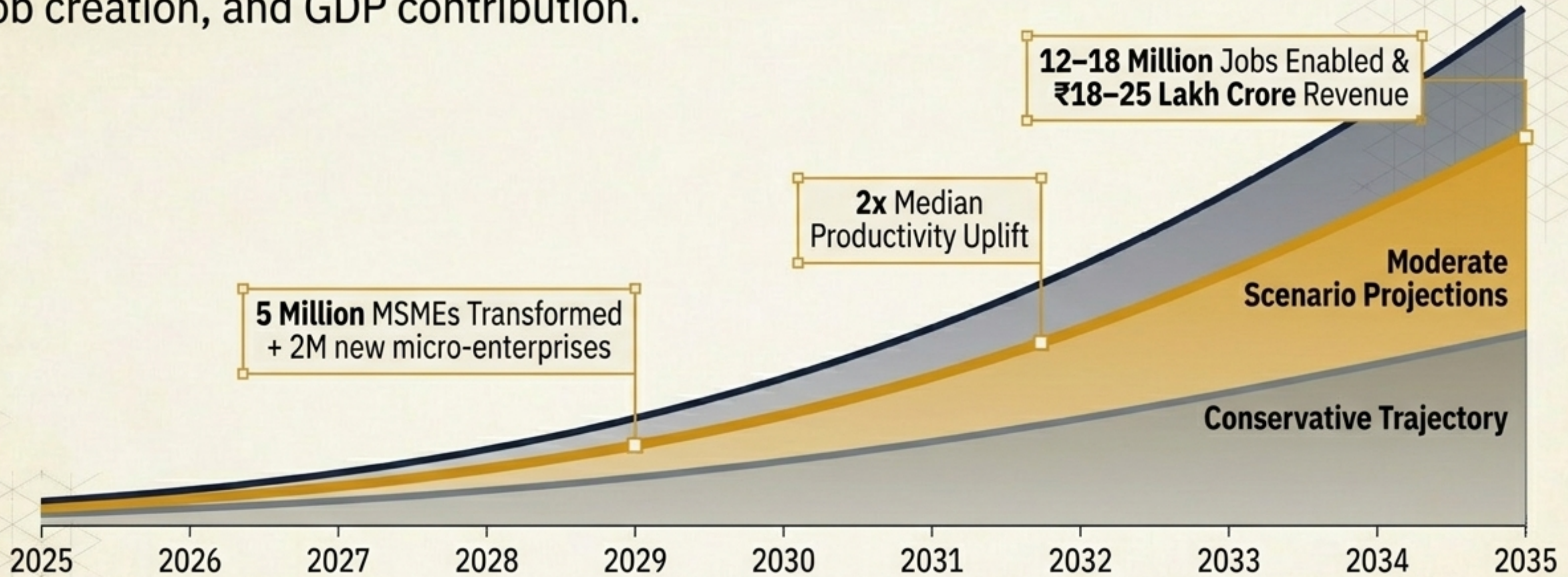
The Value Symmetry Principle

Ecosystems only survive when participation is net-positive. SPIN DTF explicitly engineers mutual value exchange for all actors.

Stakeholder	What They Give (Inputs)	What They Get (ROI)
MSMEs	Pilot environments, ground-truth data & adoption feedback.	Massive productivity gains, operational efficiency & enterprise scale.
Deep-Tech Startups	Innovation, technical execution & capability depth.	Market access, validated use-cases & capital readiness.
Academia & Students	Research rigor, intellectual property & talent pipelines.	Real-world problem sets, commercialization pathways & jobs.
Government & Investors	Policy support, scheme alignment & risk capital.	Economic formalization, macroeconomic growth & de-risked deal flow.

Vision 2035: The Economic Transformation

Orchestrated execution will unlock massive national formalization, job creation, and GDP contribution.

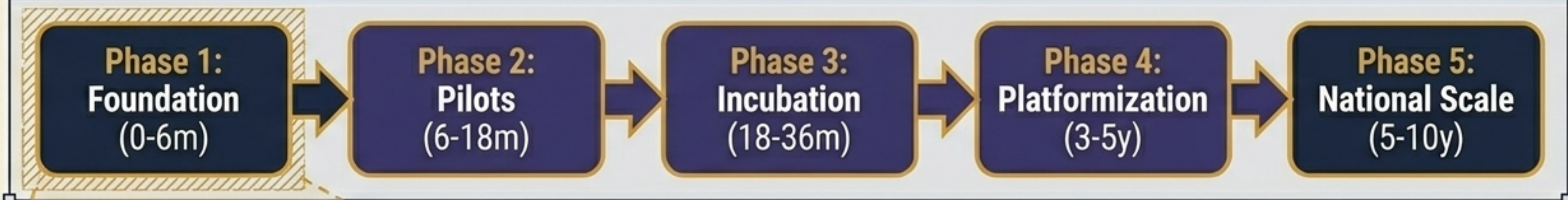


The Cost of Inaction: Without ecosystem coordination, the productivity curve is entirely missed or captured by offshore entities. The technology will arrive regardless; the difference is execution.

Strategic Phasing & Day-0 to Day-90 Blueprint

A disciplined multi-year roadmap anchored by an aggressive 90-day tactical sprint.

Macro Roadmap (10-Year Curve)

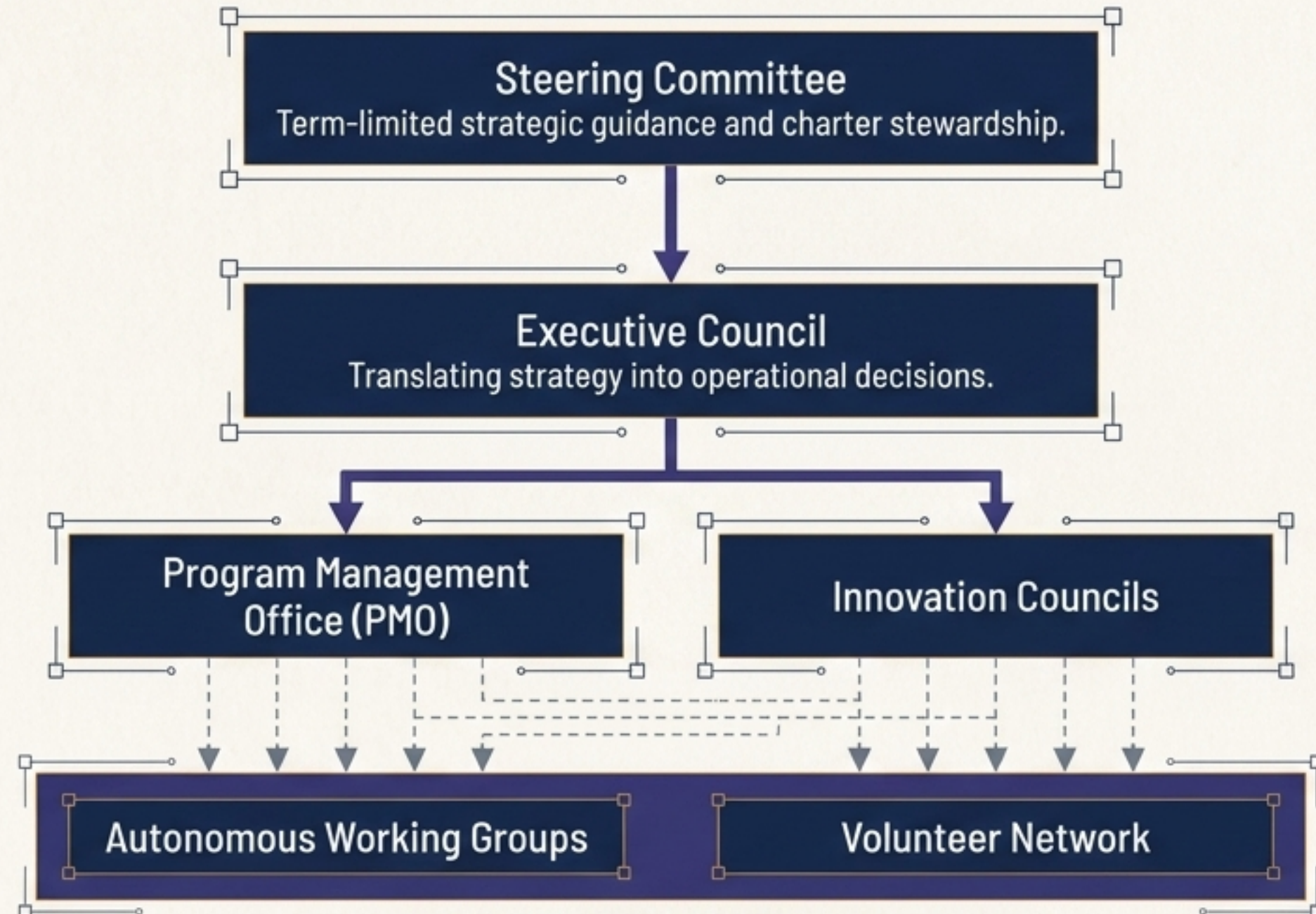


Micro Sprint (The First 12 Weeks)

Weeks 1–4 (Mobilize & Found)	Weeks 5–8 (Activate & Select)	Weeks 9–12 (Design & Launch)
<input checked="" type="checkbox"/> Ratify ecosystem charter	<input checked="" type="checkbox"/> Publish reference architecture v0	<input checked="" type="checkbox"/> Host public launch event
<input checked="" type="checkbox"/> Onboard 25 founding partners	<input checked="" type="checkbox"/> Activate 8 working groups	<input checked="" type="checkbox"/> Onboard 25+ MSMEs to initial cohorts
<input checked="" type="checkbox"/> Launch volunteer portals	<input checked="" type="checkbox"/> Select 3 lighthouse pilots	<input checked="" type="checkbox"/> Publish quarterly roadmap

Federated Governance for Ecosystem Scale

A light-institution, strong-governance model ensuring transparency, distributed execution, and immunity to capture.



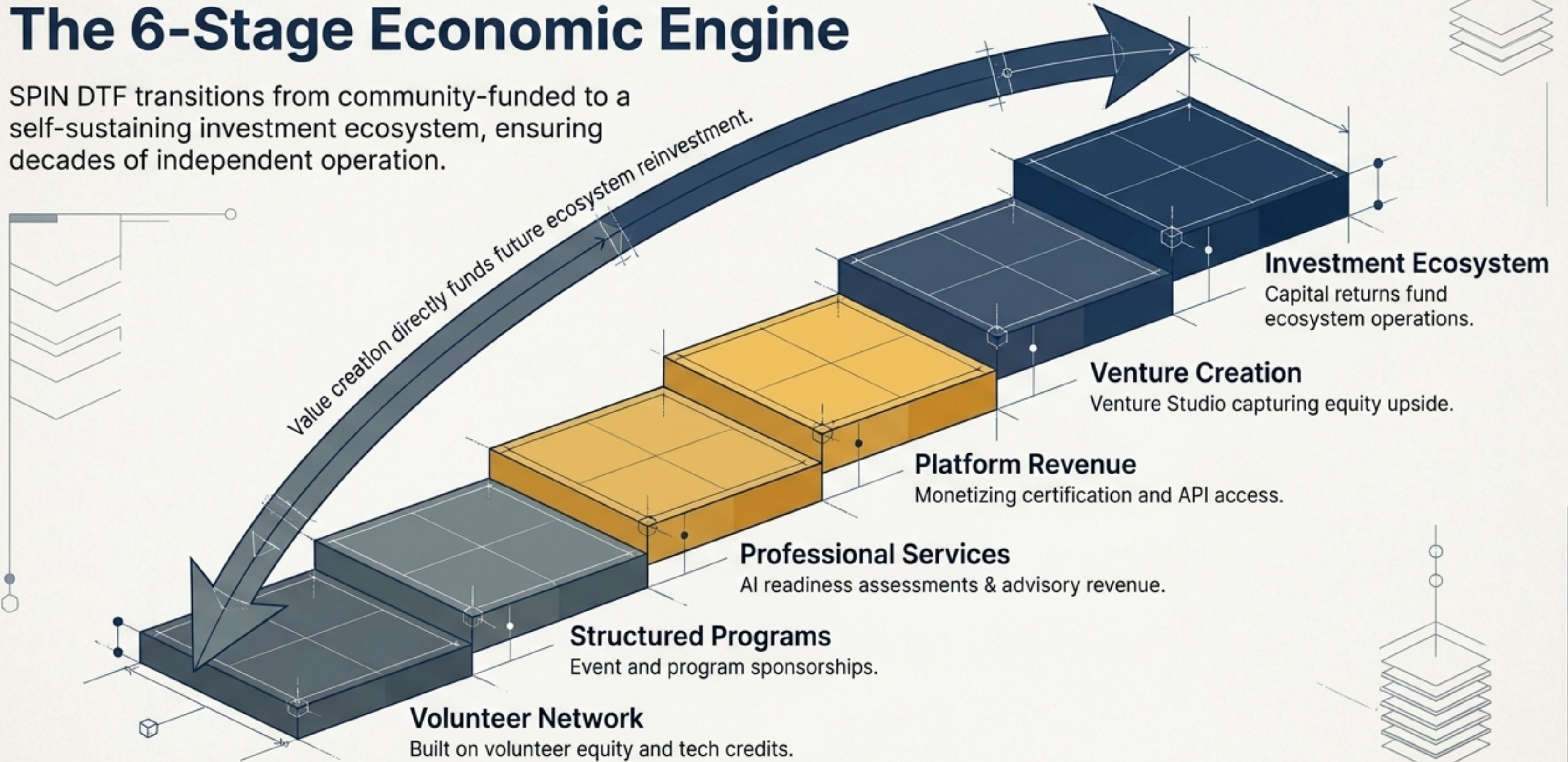
Decentralized action driving domain-specific execution.

Strict Accountability
Conflict-of-interest disclosures, public dashboards, and published failure protocols.

Strategic Orchestrator
NetworkGain Consulting provides strategic advisory to maintain structural integrity and pace.

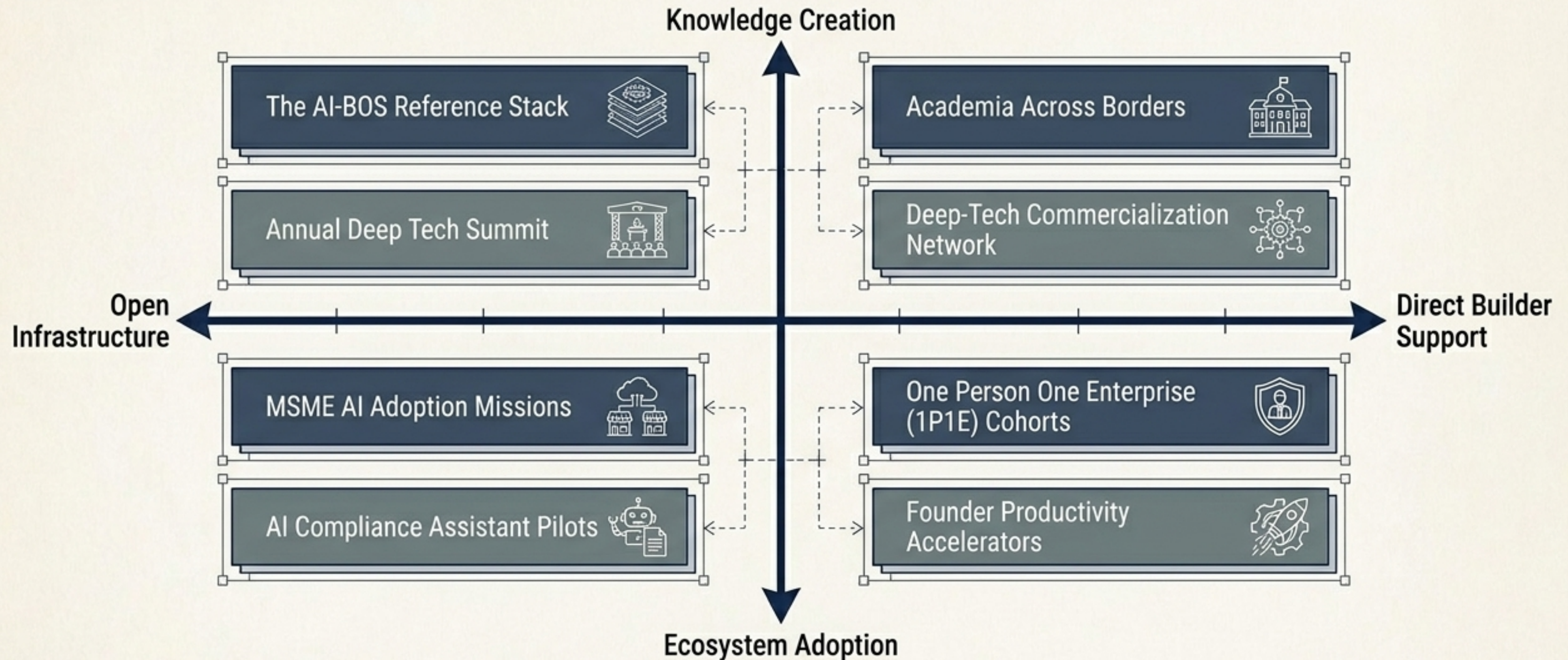
The 6-Stage Economic Engine

SPIN DTF transitions from community-funded to a self-sustaining investment ecosystem, ensuring decades of independent operation.



Translating Vision into Action: Flagships

Eight targeted, partner-led flagship programs form the visible execution layer of the SPIN DTF ecosystem.



The Mandate: A Movement, Not a Memo

The time to act is now. We invite partners to align with India's most consequential economic transition.

Become a Founding Partner

Commit Capital & Governance

For Government

For Government & Investors:

Align scheme funding and risk capital with validated, DPI-native AI ventures.



Join a Working Group

Contribute Talent & Execution

For Academia & Builders

For Academia & Builders:

Integrate with the Across Borders commercialization network. Build on the reference architectures.



Sponsor a Pilot

Provide Domain Expertise & Validation

For MSMEs & Founders

For MSMEs & Founders:

Join the adoption cohorts to establish trust, infrastructure, and visible ground-truth outcomes.



Immediate Ask: Commit as one of the 25 Founding Partners or Sponsor the Year-1 Flagship Pilots